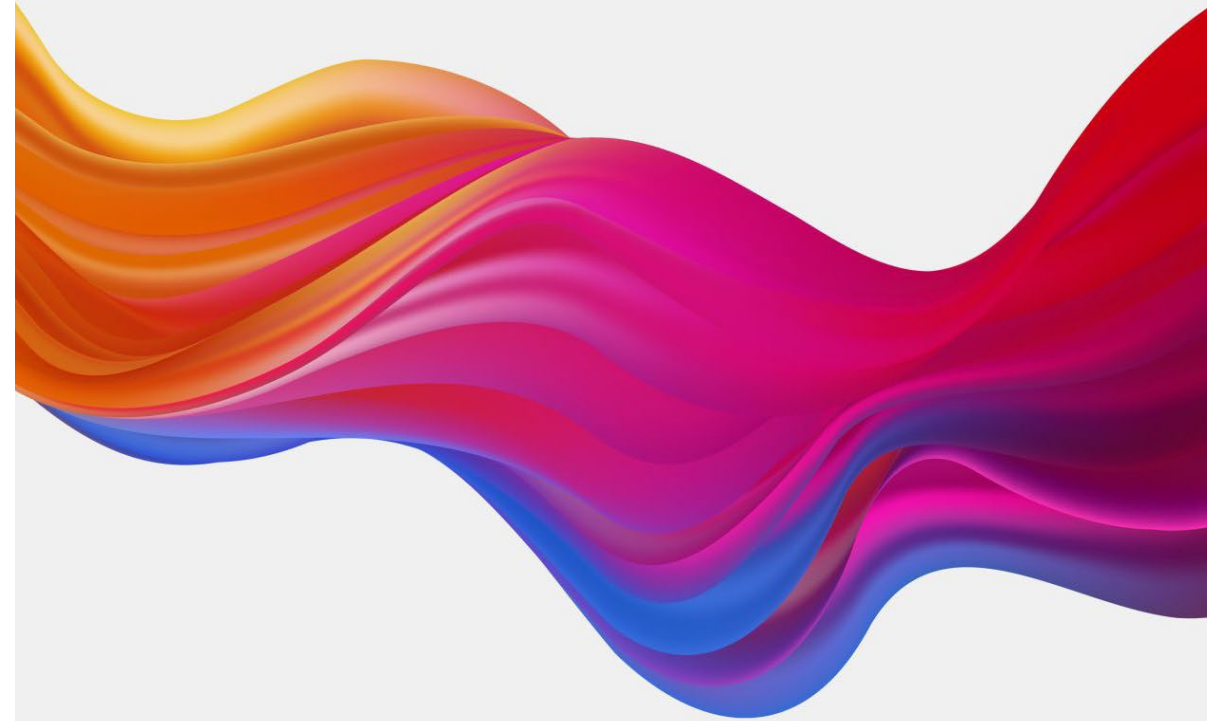


---

# THE IMPACT OF LARGE LANGUAGE MODELS ON LABOR AND PRODUCTIVITY

Alex Farach, Senior Data Scientist, Future  
of Work, Microsoft

---



---

**INTRODUCTION**

**WORK TREND INDEX 2023**

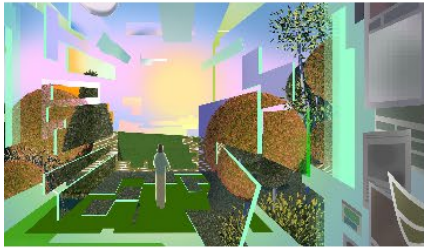
**HYBRID WORK**

**AI GOES TO WORK**

---

# WorkLab

Exploring the Science of Work and Ingenuity



### Work Trend Index Annual Report

Will AI Fix Work?



### Editor's Pick

In the Changing Role of the Office, It's All about Moments That Matter

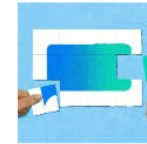


## The Art and Science of Working with AI

We're entering a new era of AI-powered productivity. Learn what business leaders need to know to get their organizations—and their people—ready

### Quick Read

What We Mean When We Say AI is "Usefully Wrong"



### Trending

How I Prompt: 11 Leaders Share Their Favorite AI Time-Savers



### Podcast

Microsoft Deputy CTO Sam Schillace on How AI Will Shift Our Productivity Paradigm



### Artificial Intelligence

A Whole New Way of Working

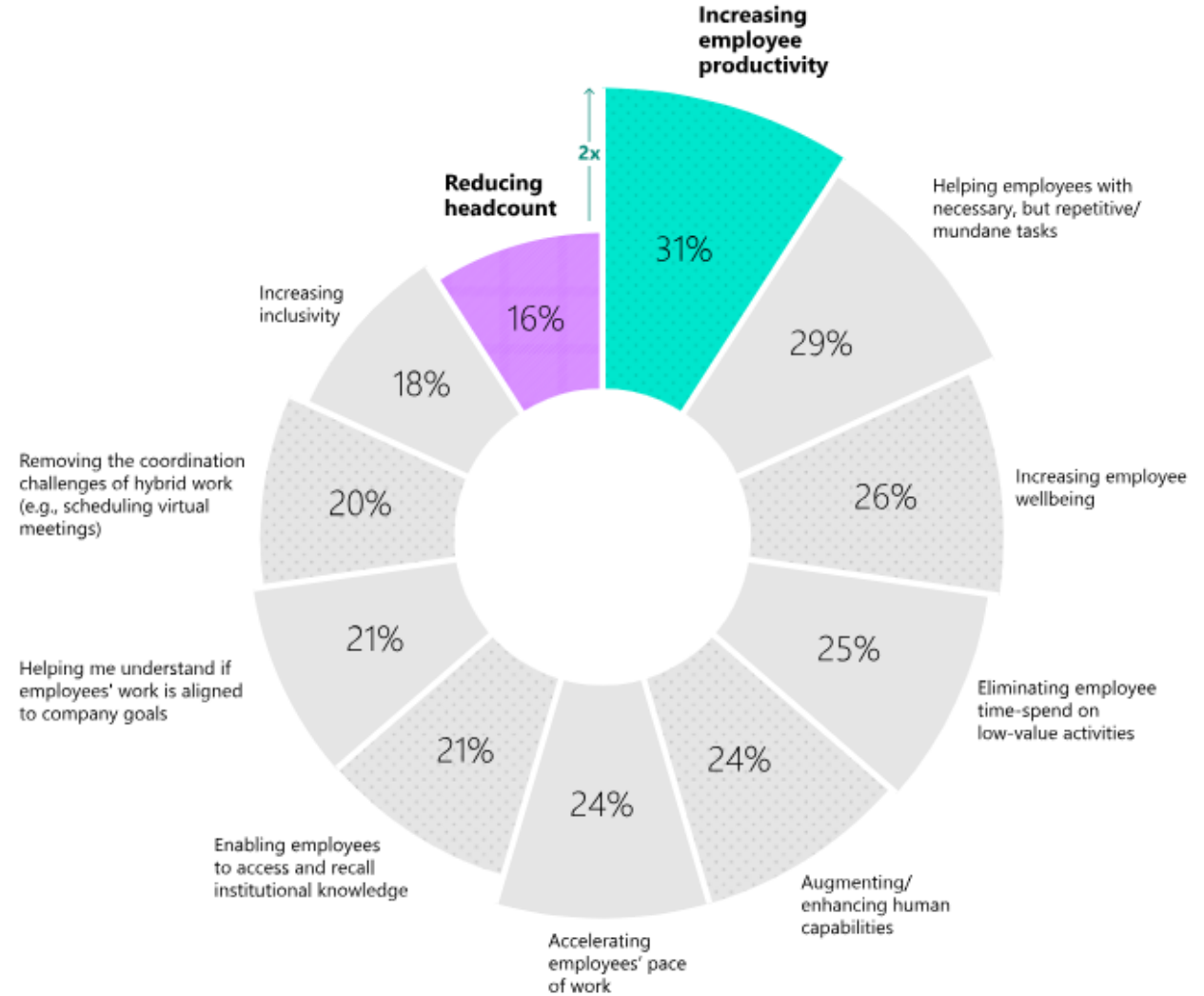


---

# WORK TREND INDEX 2023 ANNUAL REPORT MAY 9, 2023

## AI's Productivity Promise

Amid fears of AI job loss, business leaders are 2x more likely to choose 'increasing employee productivity' than 'reducing headcount' when asked what they would most value about AI in the workplace.



---

# WORK TREND INDEX 2023 ANNUAL REPORT MAY 9, 2023

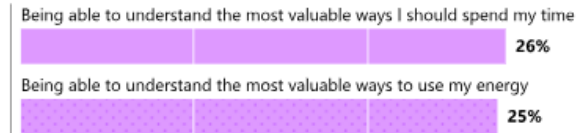
## Work in 2030: What People Want—That AI Can Deliver

Asked to imagine work in 2030, people we surveyed say they'd most value changes that saved them time—like producing high-quality work and learning new skills faster.

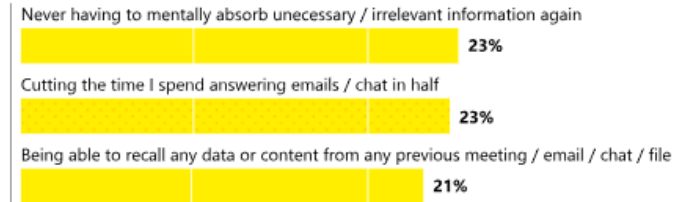
### Save time



### Work smarter



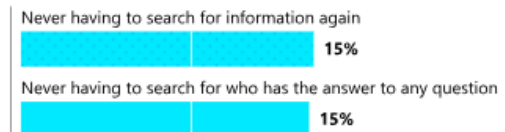
### End information overload



### Banish busywork



### Solve search



### Unleash creativity



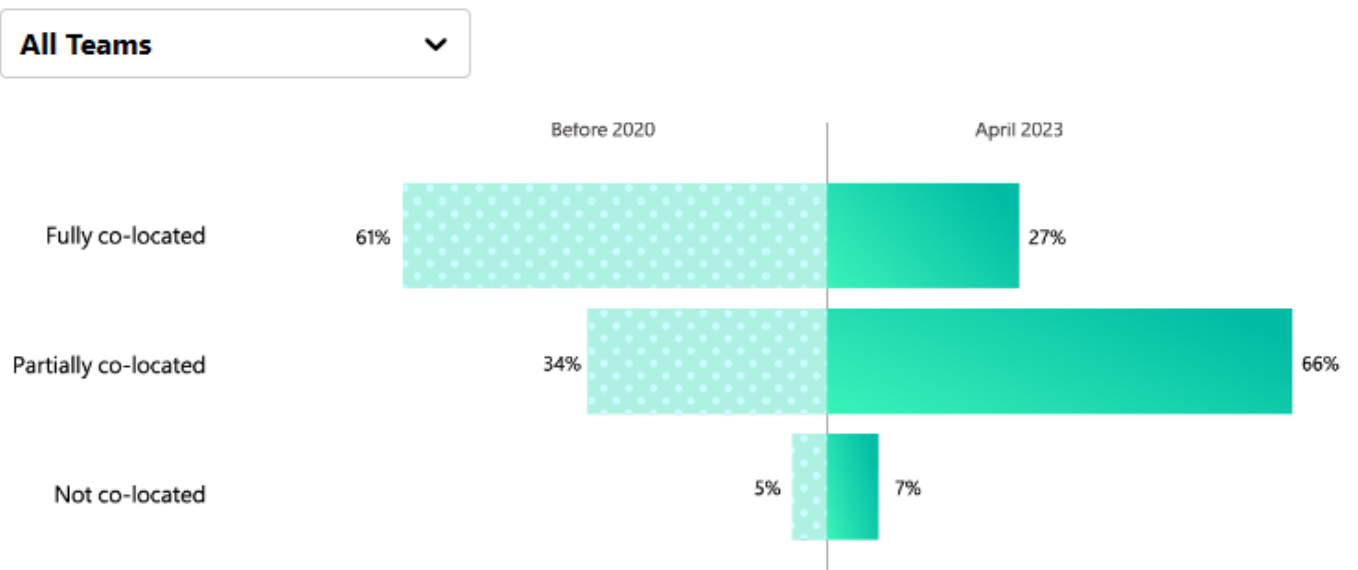
---

# MOMENTS THAT MATTER

---

## Fewer Teams Are Fully Co-Located Than in 2020

New research shows that teams are more geographically dispersed than before the pandemic, and fewer teammates all live within the same city.\*



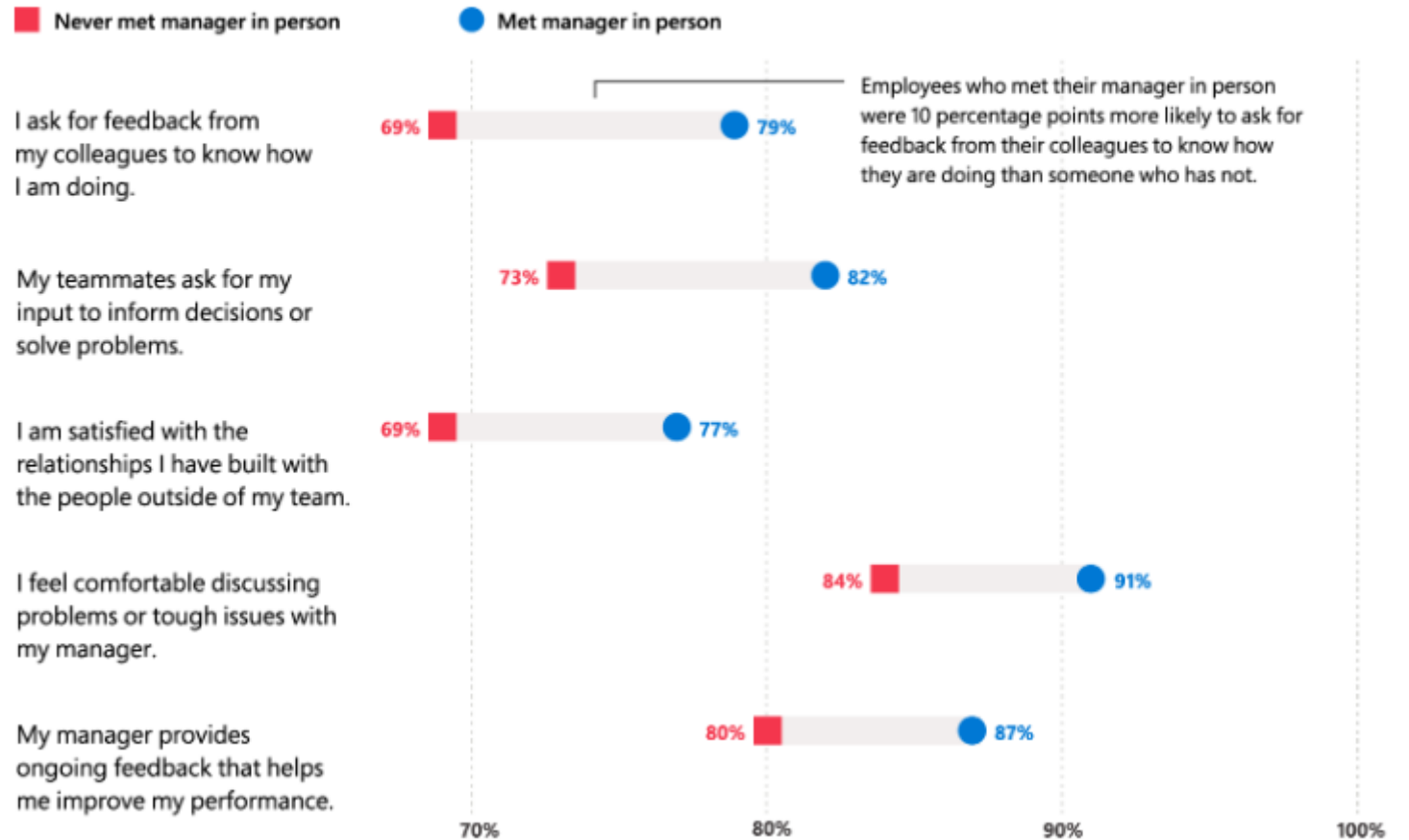
---

# MOMENTS THAT MATTER

---

## Meeting In Person Has Clear Benefits for New Hires

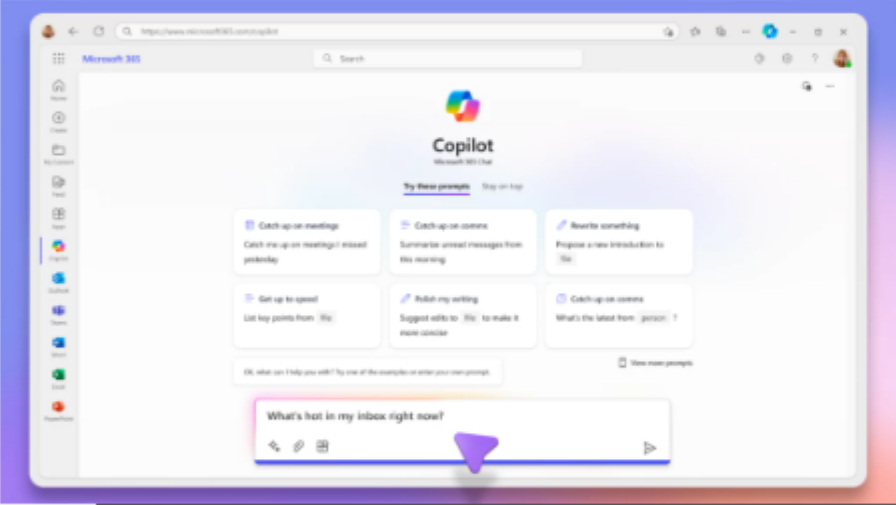
For new employees, connecting with their manager or onboarding “buddy” in person has a measurable short-term effect on how well they integrate with their new teams.



# AI GOES TO WORK

Microsoft | Microsoft 365 Products Solutions Plans and pricing More All Microsoft

Blog home / Microsoft 365 Search the blog



**News** **Microsoft 365** **Enterprise** · 9 min read

## Announcing Microsoft 365 Copilot general availability and Microsoft 365 Chat

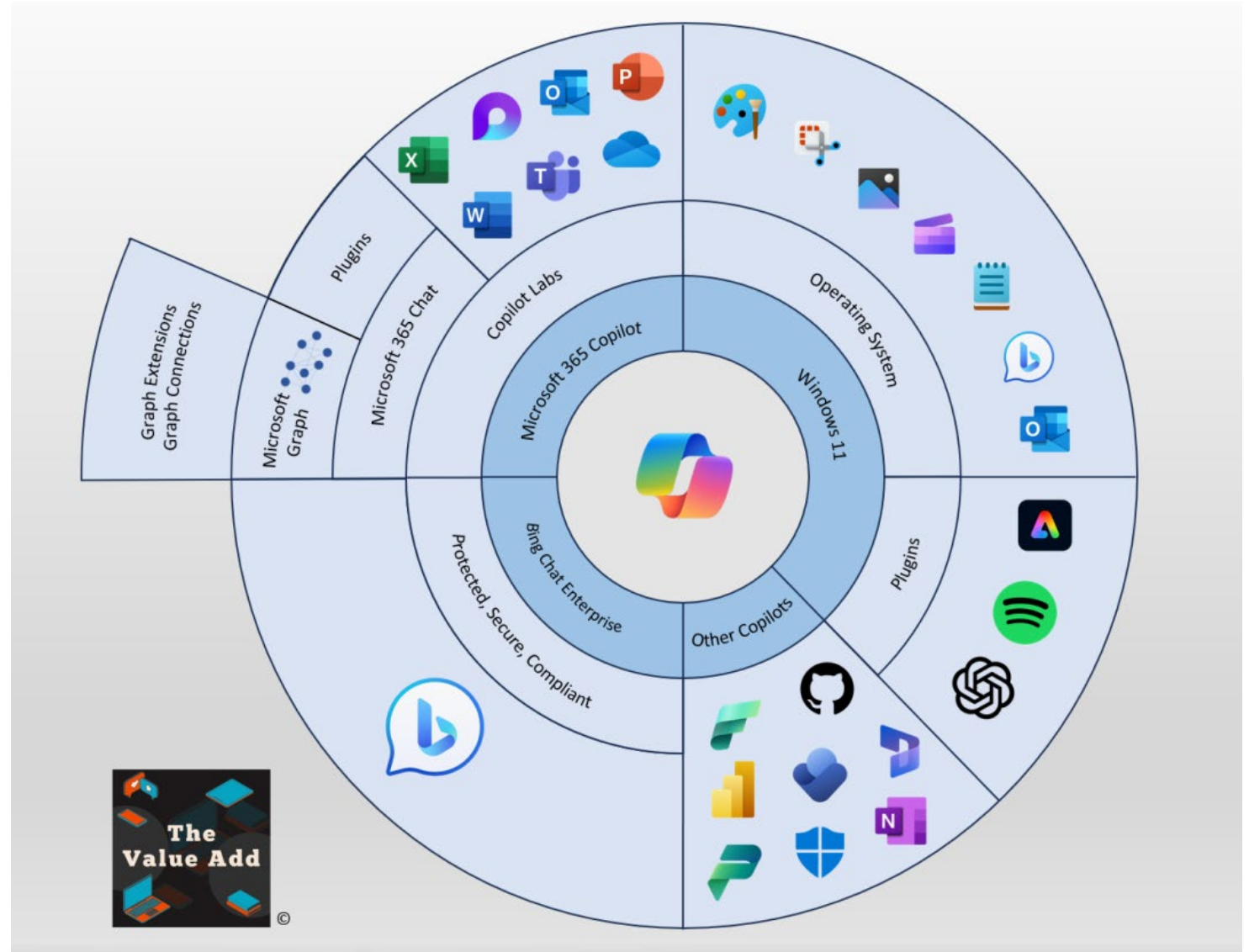
By [Jared Spataro](#), Corporate Vice President, Modern Work & Business Applications

September 21, 2023



---

# AI GOES TO WORK



---

# AI GOES TO WORK

## AutoGen: Enabling next-generation large language model applications

Published September 25, 2023

Share this page [f](#) [t](#) [in](#) [r](#) [RSS](#)

“Capabilities like AutoGen are poised to fundamentally transform and extend what large language models are capable of. This is one of the most exciting developments I have seen in AI recently.”

*Doug Burger, Technical Fellow, Microsoft*

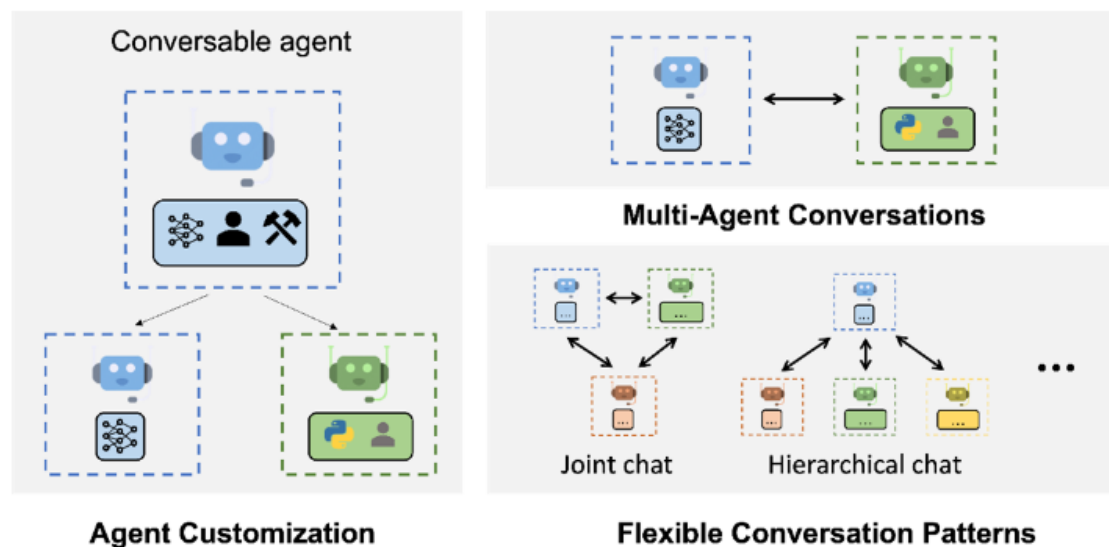


Figure 1. AutoGen enables complex LLM-based workflows using multi-agent conversations. (Left) AutoGen agents are customizable and can be based on LLMs, tools, humans, and even a combination of them. (Top-right) Agents can converse to solve tasks. (Bottom-right) The framework supports many additional complex conversation patterns.

---

# AI GOES TO WORK

- As AI's real-world impact on work begins to accumulate, more research is on the horizon.
- The initial hype surrounding AI is subsiding, giving way to more grounded discussions. There is a maturation in the dialogue surrounding AI's role in the workplace taking shape.
- AI continues to be a hot topic, especially its impact on fostering creativity. The rapid pace of AI evolution promises that today's capabilities are just the tip of the iceberg.
- The conversation is shifting from understanding AI's mechanics to exploring thoughtful adoption and ethical usage. This shift denotes a growing acceptance and optimism regarding AI's potential for positive impact.
- Users are now evaluating AI tools with a critical lens, focusing on real-world performance over hyped promises. This trend underscores the importance of delivering on the promised capabilities.