



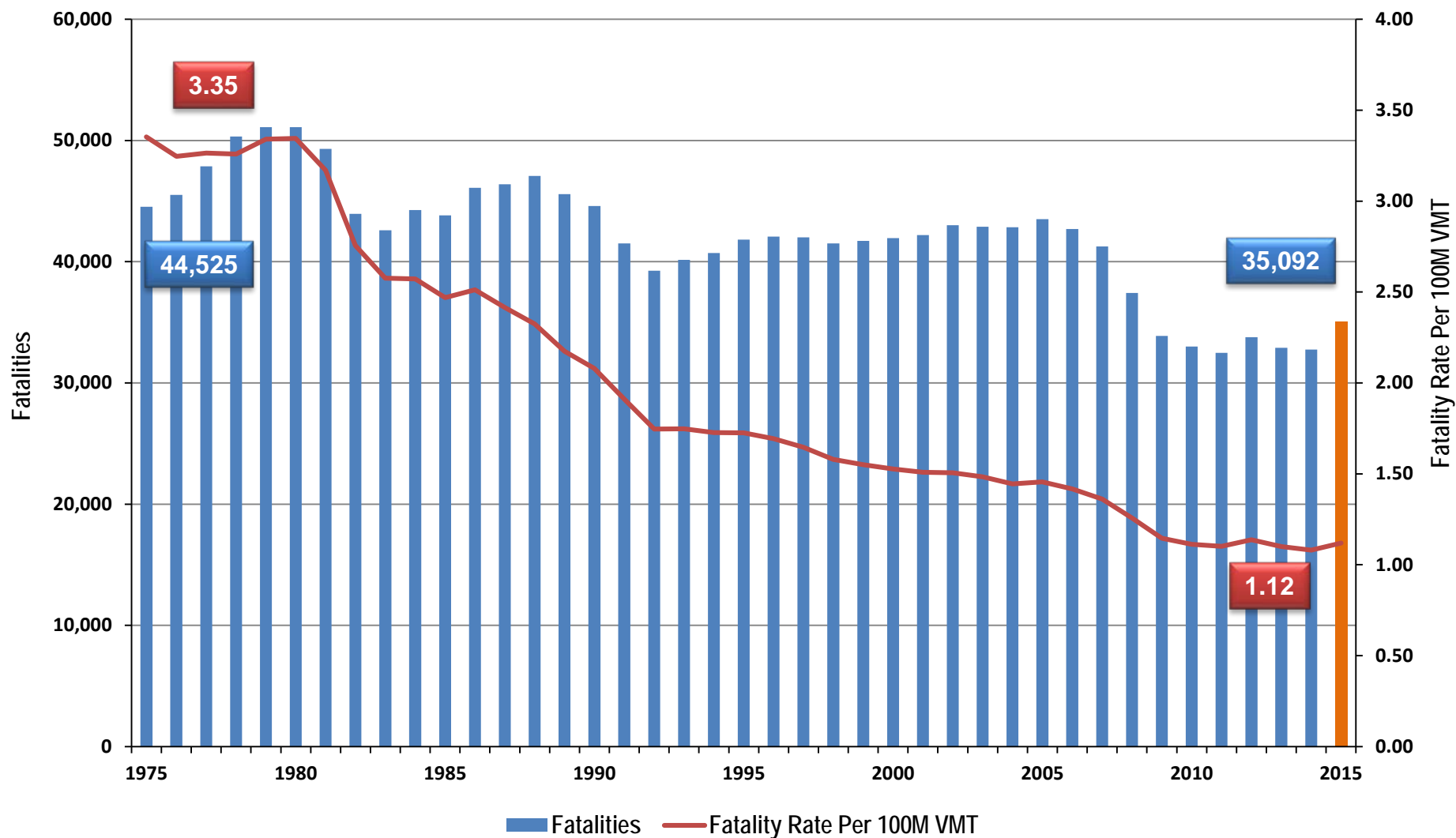
GIS @NHTSA Mapping Fatal Traffic Crashes

NHTSA's NCSA

November 18, 2016



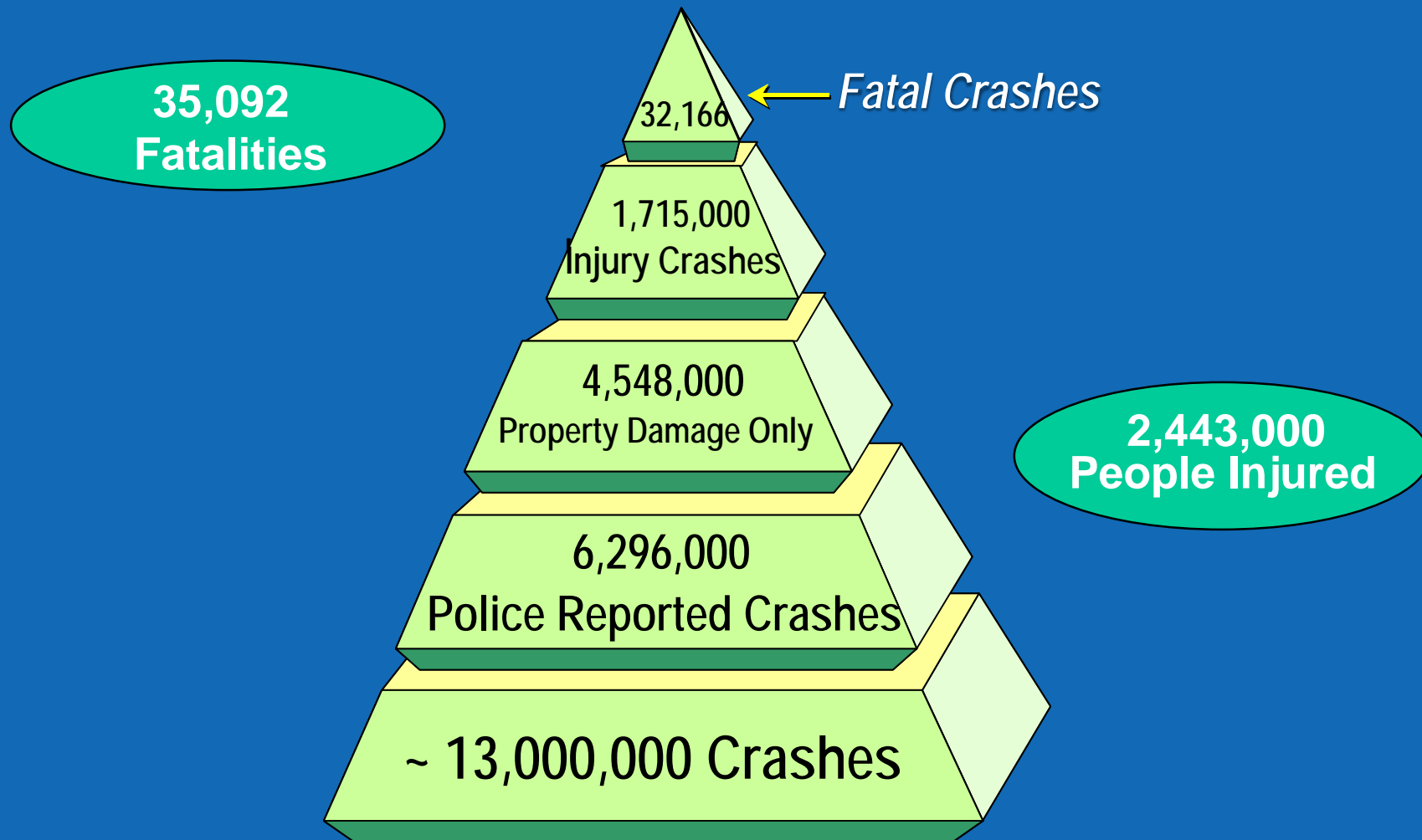
Fatalities and Fatality Rates, 1975-2015



Source: FARS,
FHWA₂



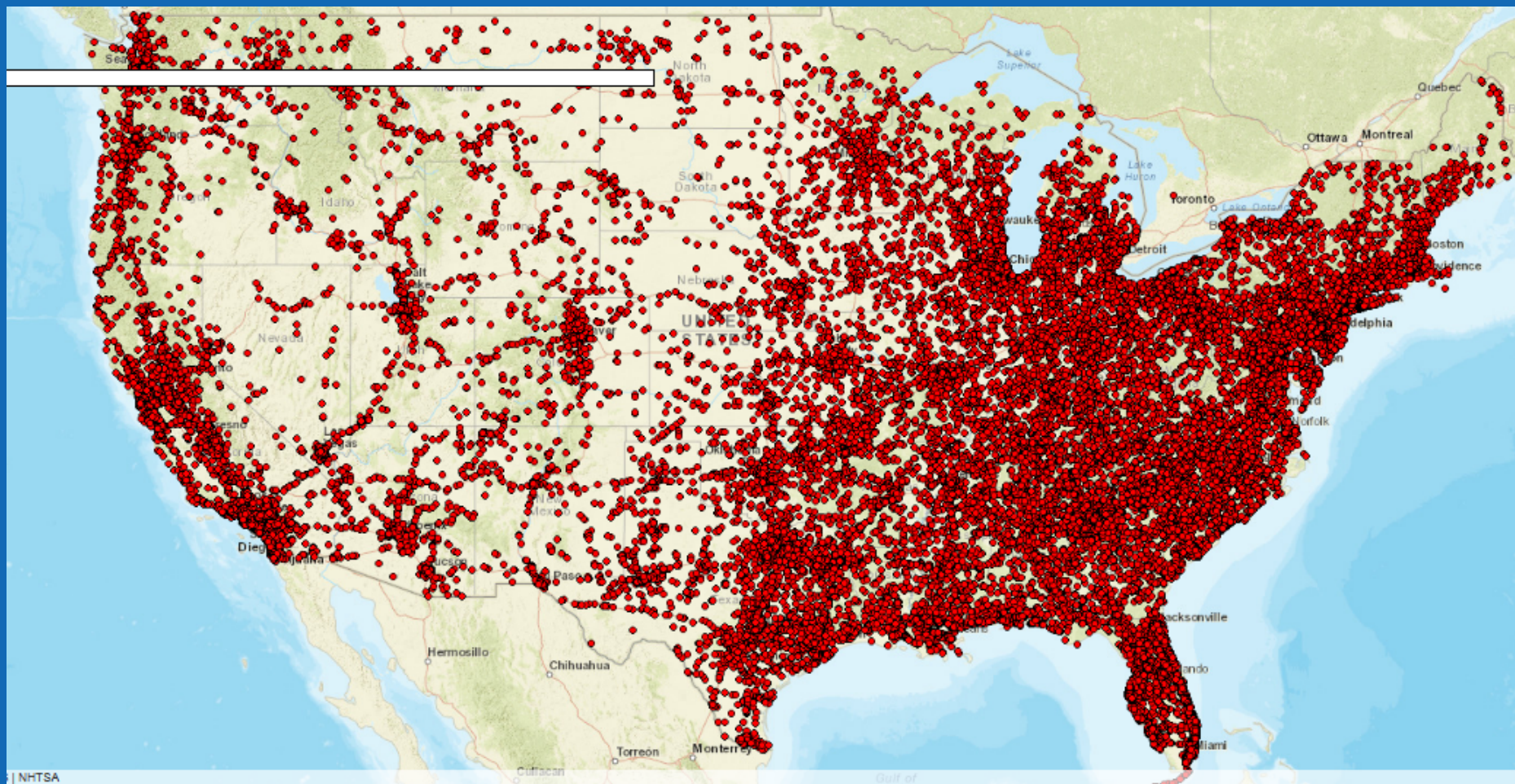
Crashes by Crash Severity, 2015



Economic Cost: \$242B; Societal Harm: \$836B



Fatal Crashes in the US, 2015

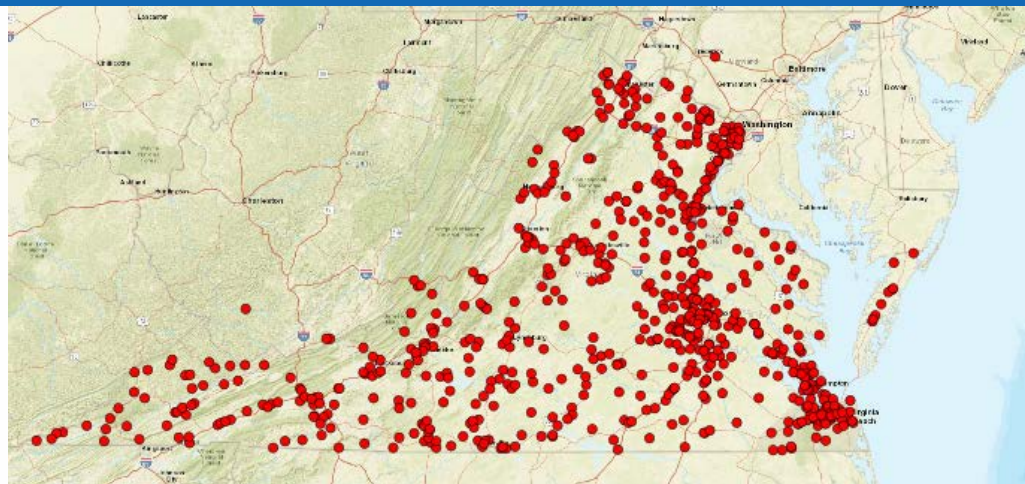
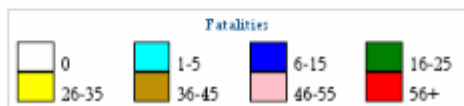
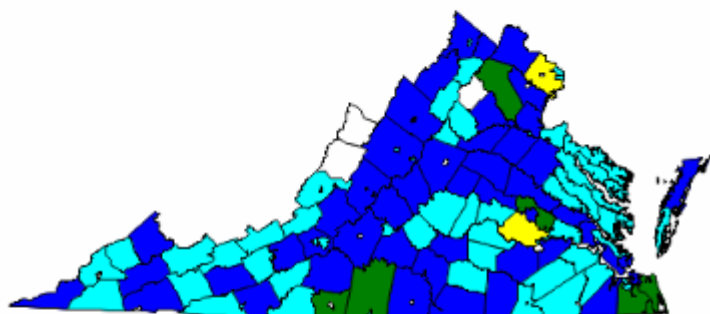




State Traffic Safety Information

(STSI)

- SAS Intelligence and ESRI ArcGIS Server 10.3





Other Geospatial Analysis

- Proximity of Level 1 Trauma Centers to crash locations
- Air Medical Services Coverage Areas
- Rural/Urban/Suburban effects on traffic safety
- Traffic Safety in BIA land



- NHTSA's Fatality Analysis Reporting System (FARS)
- Geocoded data from 2001-2015
- Public datasets



- Rajesh.subramanian@dot.gov